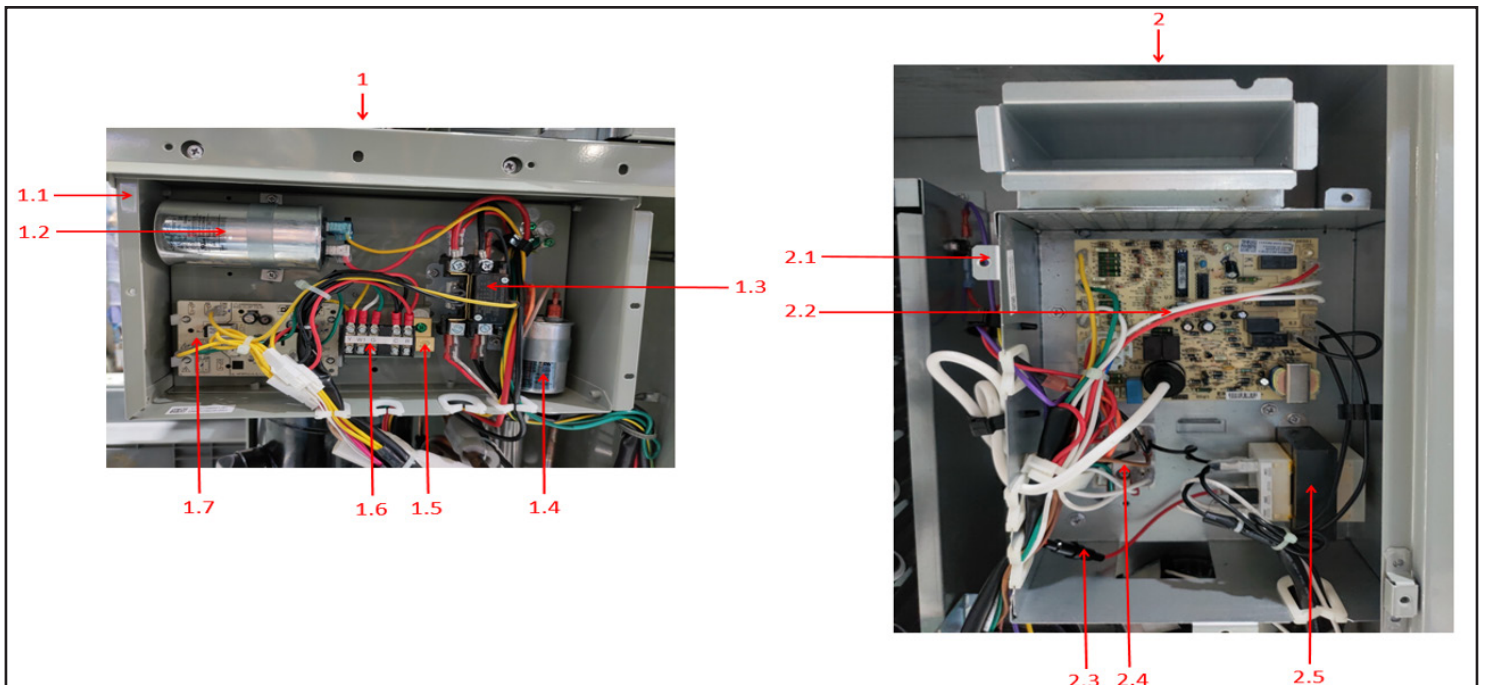
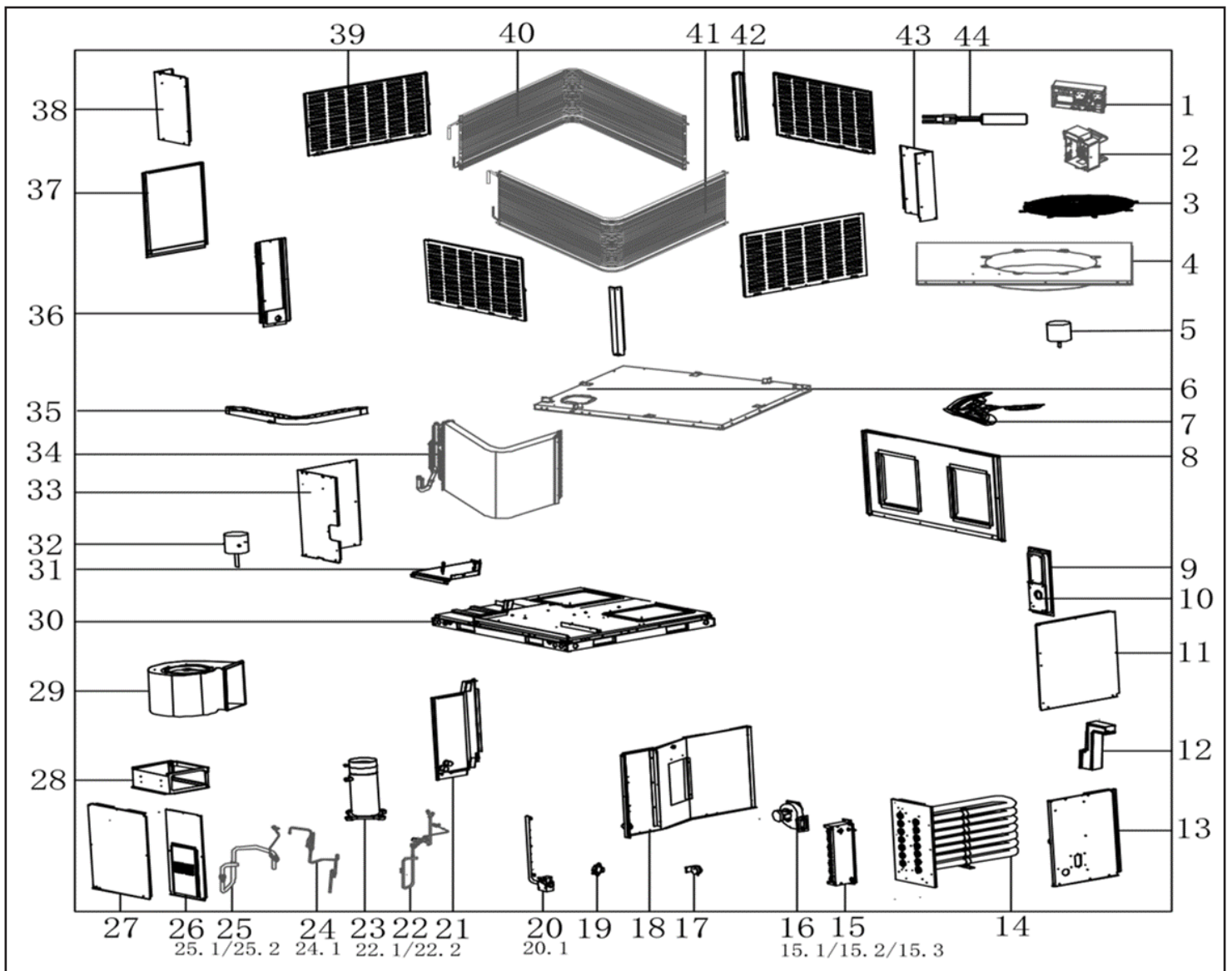

Comfort-Cire® **Century**®
SE Series

Electric Gas Packaged Unit

RGP60110S1A
Parts List



MARS®



Electric Gas Packaged Unit

RGP60110S1A Parts List

EX_ID	Spare Parts Code	Part Name(EN)	Qty.	Recommend store spare parts
1	17227700A02475	E-part box assembly	1	
1.1	12227700A08021	Electronic control box body assembly	1	
1.2	17400103000133	Capacitor	1	
1.3	11203502000032	AC contactor	1	
1.4	17400103000151	Capacitor	1	
1.5	11201708000008	Wiring Terminal	1	
1.6	17400401001516	Wire joint	1	
1.7	17127700001166	Main control board assembly	1	
2	17227700001259	E-part box assembly	1	
2.1	12227700010298	Electronic control box body assembly	1	
2.2	17127600000648	Gas furnace, Main control board assembly	1	
2.3	17401203020513	Strong electric cable group	1	
2.4	17400401000208	terminal block,2P	1	
2.5	11203103000194	Linear Transformer	1	
3	12927700000301	protection net	1	
4	12227700010180	Top cover welding assembly	1	
5	11002012028483	Single Phase Asynchronous Motor	1	
6	12227700A08036	Top cover assembly	1	
7	12200104000122	Axial fan	1	
8	12227700A07327	components inside the panel	1	
9	12227700007209	Gas-collecting hood	1	
10	12227700006982	Exhaust baffle	1	
11	12227700A07315	Internal panel assembly	1	
12	12227700007353	Flue assembly	1	
13	12227700A07355	Pole 5	1	
14	15727700000055	Heat-exchanger ass'y	1	
15	12227700010293	Burner ass'y	1	
15.1	17427600001429	Firing pin	1	
15.2	17400513000045	Thermostat	1	
15.3	11201006000010	Special sensor	1	
16	17400801008424	Exhaust fan ass'y	1	

EX_ID	Spare Parts Code	Part Name(EN)	Qty.	Recommend store spare parts
17	112010080000002	Pressure sensor	1	
18	12227700010268	Partition board assembly	1	
19	17400513001114	Thermostat	1	
20	15427700002351	Gas Components	1	
20.1	17427600001389	Gas Valve	1	
21	12227700A08026	Partition board assembly	1	
22	15427700002355	Air discharge pipe assembly	1	
22.1	17400516000628	Pressure controller	1	
22.2	15500301000035	meter connector	1	
23	11102010000369	Fixed Speed Scroll compressor	1	
24	15427700002354	Throttle assembly	1	
25	15427700002353	Suction pipe assembly	1	
26	12227700A08019	Outer panel assembly	1	
27	12227700A07367	Internal panel assembly	1	
28	12227700006171	Fan support board	1	
29	12200101000213	Wind turbine parts	1	
30	12227700A08025	Chassis part	1	
31	12227700A08024	Compressor base	1	
32	11002015011927	Brushless DC Motor	1	
33	12227700A08028	Panel	1	
34	15827700001189	Evaporator assembly	1	
35	12127700000097	Drainage pan assembly	1	
36	12227700A07376	Column assembly	1	
37	12227700A07372	Internal panel assembly	1	
38	12227700A08023	Outer panel	1	
39	12227700A07351	Protective plate assembly	4	
40	15827700001269	Condenser part	1	
41	15827700001268	Condenser part	1	
42	12227700006368	Column	2	
43	12227700A08035	Outer panel assembly	1	
44	17400513000070	Discharge Temp. sensor	1	

Due to ongoing product improvements, specifications and dimensions are subject to change and correction without notice or incurring obligations. Determining the application and suitability for use of any product is the responsibility of the installer. Additionally, the installer is responsible for verifying dimensional data on the actual product prior to beginning any installation preparations.

Incentive and rebate programs have precise requirements as to product performance and certification. All products meet applicable regulations in effect on date of manufacture; however, certifications are not necessarily granted for the life of a product. Therefore, it is the responsibility of the applicant to determine whether a specific model qualifies for these incentive/rebate programs.



1900 Wellworth Ave., Jackson, MI 49203 • Ph. 517-787-2100 • www.marsdelivers.com

